

TOUR & EXPLORE THE JAPANESE BONSAI WORLD

With Wm. N. Valavanis & Kora Dalager

VALUE
PRICED
BONSAI
TOURS



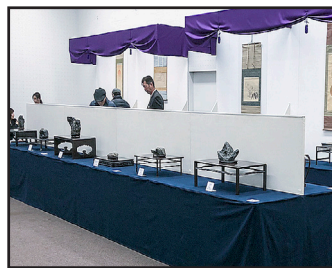
FEBRUARY 8-16, 2019
OPTIONAL EXTENSION TO TOKONAME & MORE

Want To See The Best Bonsai In Japan?

Join the hundreds of people from around the world who have joined our popular bonsai tours to see private collections, exhibitions and some of the finest bonsai masterpieces in Japan.

You will not be disappointed!

- 2 PART KOKUFU BONSAI EXHIBITION
- NIPPON SUISEKI EXHIBITION
- UENO GREEN CLUB SALES COMPLEX
- OMIYA BONSAI VILLAGE
- OMIYA BONSAI ART MUSEUM
- MASAHIKO KIMURA'S STUDIO
- KUNIO KOBAYASHI'S STUDIO
- SEIJI MORIMAE'S S-CUBE



BONSAI TRAVEL

Kora Dalager

5725 Pepperridge Way • Concord, CA 94521

Tel: (510) 610-9064 • kora@astound.net

TENTATIVE WINTER 2019 JAPAN INTERNATIONAL BONSAI EXPLORATION

Friday, February 8, 2019
U.S.A./ Tokyo

Leave your home city for your flight for your adventure in Japan. You are about to enter a totally foreign culture with traditions thousands of years old. You will cross the International Date line and arrive in Tokyo on the next day.

Saturday, February 9, 2019
Tokyo

After immigration and customs clearance you will be assisted to your hotel for seven nights.

Sunday, February 10, 2019
Tokyo/Kokufu Bonsai Exhibition- Part 1

This morning we will walk to the Ueno Green Club to take a shuttle bus to Part 1 of the 93RD Kokufu Bonsai Exhibition. This is the finest and most prestigious bonsai exhibition in the world with the longest history. Over 200 bonsai of most species and styles will be traditionally displayed with accessories. An entire room is dedicated to medium size bonsai and another room only for shohin bonsai.

Nearby at the Ueno Green Club the Japan Bonsai Cooperative sponsors a spectacular bonsai sales area. An outdoor area and a three story building are completely filled with bonsai, containers, tools suiseki and anything else you could imagine suitable for bonsai.

Monday, February 11, 2019
Tokyo/Kokufu Bonsai Exhibition- Part 1

All day available to return to the Kokufu Bonsai Exhibition, Ueno Green Club or to explore the many sights and gardens of Tokyo.

Tuesday, February 12, 2019
Tokyo/Omiya/Hanyu/Tokyo

Today we will first travel to Hanyu to visit the S-Cube Bonsai Garden Uchiku-Tei of Seiji Morimae. His garden has thousands of bonsai for sale as well as containers, antiques and bonsai tables for sale. Next we will visit the private bonsai garden of Masahiko Kimura. New innovative bonsai as well as classical masterpieces can be seen in his garden. Afterwards you will visit the Omiya Bonsai Art Museum, see their outstanding displays and enjoy a delicious lunch across the street in a restaurant. A leisurely walk follows exploring the Omiya Bonsai Village where some of the finest bonsai in the world are created and maintained. You will visit the bonsai gardens of Kato, Yamada, Murata and Takeyama.

Wednesday, February 13, 2019
Tokyo/Shizuoka/Tokyo

This morning we will enjoy a private visit to Shunka-en Bonsai Museum of Kunio Kobayashi. His museum features some of the finest bonsai in the world displayed in traditional Japanese alcoves. Several of the top award winning pine and satsuki bonsai can be enjoyed as well as antique Japanese and Chinese container collection. Bonsai tables, suiseki, books and containers are available for sale. Next we will take the bullet train to Shizuoka to visit the Taisho-en Bonsai Garden of Taiga Urushibata and his father. Shohin bonsai are grown and trained in this specialized garden as well as distinctive larger masterpieces.

Thursday, February 14, 2019
Tokyo/ Kokufu Bonsai Exhibition- Part 2

An all day visit will be made to Part 2 of the Kokufu Bonsai Exhibition where all the trees will be changed and over 200 new bonsai will be displayed. Also we will attend the opening of the 6TH Japan Suiseki Exhibition which is held in the same building as the Kokufu Bonsai Exhibition. This will be a rare opportunity to see some of the finest, rarely seen suiseki in Japan from private temple collections.

Friday, February 15, 2019
Tokyo/ Kokufu Bonsai Exhibition- Part 2

An all day return visit can be made to Part 2 of the Kokufu Bonsai Exhibition and the Nippon Suiseki Exhibition. Visit the Ueno Green Club or explore the many sights and gardens of Tokyo.

Saturday, February 16, 2019
Tokyo/U.S.A.

This morning at your leisure to explore Tokyo on your own or make a brief visit to the exhibition. In the afternoon you will be transferred to a Tokyo Airport for your flight home. As you cross the International Date Line you will arrive home on the same calendar day.



INSURANCE

Comprehensive travel insurance, to protect you for cancellations due to medical reasons for you, members of your family or traveling companion, staying in the same room. Coverage for medical, baggage, baggage delay, travel accident, vacation delay and medical transportation is available and highly recommended please ask for quote. It is strongly recommended that you purchase this protection at the time of initial reservation payment. A pre-existing condition exclusion applies. If insurance is purchased within seven days of initial deposit, the pre-existing exclusion is waived. Insurance also protects you in the case of Default of Operator. If you purchase insurance and your traveling companion cancels, insurance will cover the cost for the single supplement. Each passenger must purchase his own policy in order to be covered. A complete Certificate of Insurance will be provided to you. It is your responsibility to understand the conditions of the insurance. If you have any questions needing clarification, please contact Kora Dalager or for other insurance options.

RESPONSIBILITIES

Bonsai Travel acts only as agent for the owners of contractors providing transportation or other services. All tickets are issued subject to any terms and condition under which these means of transportation or other services are provided. The issuance and acceptance of your tickets will be deemed to be the consent to the further condition that neither Bonsai Travel or its hosts will be liable or held responsible in any way in connection with transportation or other services or any loss however caused. The tickets and/or contracts in the use by the airlines, owners or contractor providing transportation or other services shall constitute the sole contract between themselves and the tour member. The right is reserved to withdraw any tour and/or make alterations in the itinerary, if found necessary, and to decline to accept any person as a member at any time. Host is based on minimum participation. Invoices are subject to corrections for error or adjustment for changes. Bonsai Travel is unable to provide a refund for any unused portion of the package. Package price is only guaranteed when paid in full, however, may be subject to change based on currency fluctuations or tax increases which are beyond Bonsai Travel's control.

TOUR COSTS

LAND ARRANGEMENTS

Double Occupancy (Per Person) **\$2,550**
Single Occupancy Supplement **\$300**

Land Arrangements Include:

- Hotel Accommodations, bed & breakfast
- Round Trip Transfers– Airport To Hotel
- Private Motorcoach Transportation
- Admission to Exhibitions & Gardens ■ Taxes
- Porterage For One Piece Of Luggage

Not Included:

- Airfare ■ Gratuities
- Items Not Specifically Described, Personal Items

AIRFARE

*Since airfares fluctuate daily, ask for rates from your hometown
 All prices subject to change due to currency exchange*

- Minimum participation necessary.
- Prices listed are for 10 people. There is a surcharge if less than 10 people participate.
- Based on 2018 prices and may be subject to change.

■ **Contact Kora Dalager for questions at:
 (510) 610-9064 or kora@astound.net**

Ask About Extending Your Tour!

CANCELLATION CHARGES

Assessed as follows:

Prior to December 1, 2018

Full Refund

December 1 to departure

NO REFUND

Fees assessed represent penalties charged by Bonsai Travel, hotels, tour companies and ground operators and under no circumstances can they be waived or reduced.

CA Sellers Of Travel: CST: 2081121-40



Yes, please register the following for the **WINTER 2019 JAPAN INTERNATIONAL BONSAI EXPLORATION:**

NAME(S) _____

ADDRESS _____ CITY _____ STATE _____

ZIP _____ PHONE (DAY) _____ PHONE (EVENING) _____

E-MAIL _____

Deposit (payable to Bonsai Travel) **\$300 \$** _____

Land Arrangements (double occupancy) **\$2,550 \$** _____

Single Supplement **\$300 \$** _____

Airfare- Ask about departure cost from your home city as rates change daily

Ask about quote on Insurance Premium if desired

Final payments due by December 1, 2018 (Your balance will be billed later)

TOTAL ENCLOSED \$ _____

Please indicate who you are traveling with if not included above: _____

I (we) have read, understand and agree to the conditions as set forth in this flyer, especially those paragraphs relating to payments, cancellations, refunds, cancellations/default of operator insurance and responsibilities of Bonsai Travel Insurance.

Signature(s) _____

Please send completed form and deposit to:

Kora Dalager ■ Tel: (510) 610-9064

5725 Pepperridge Way ■ Concord, CA 94521 ■ kora@astound.net